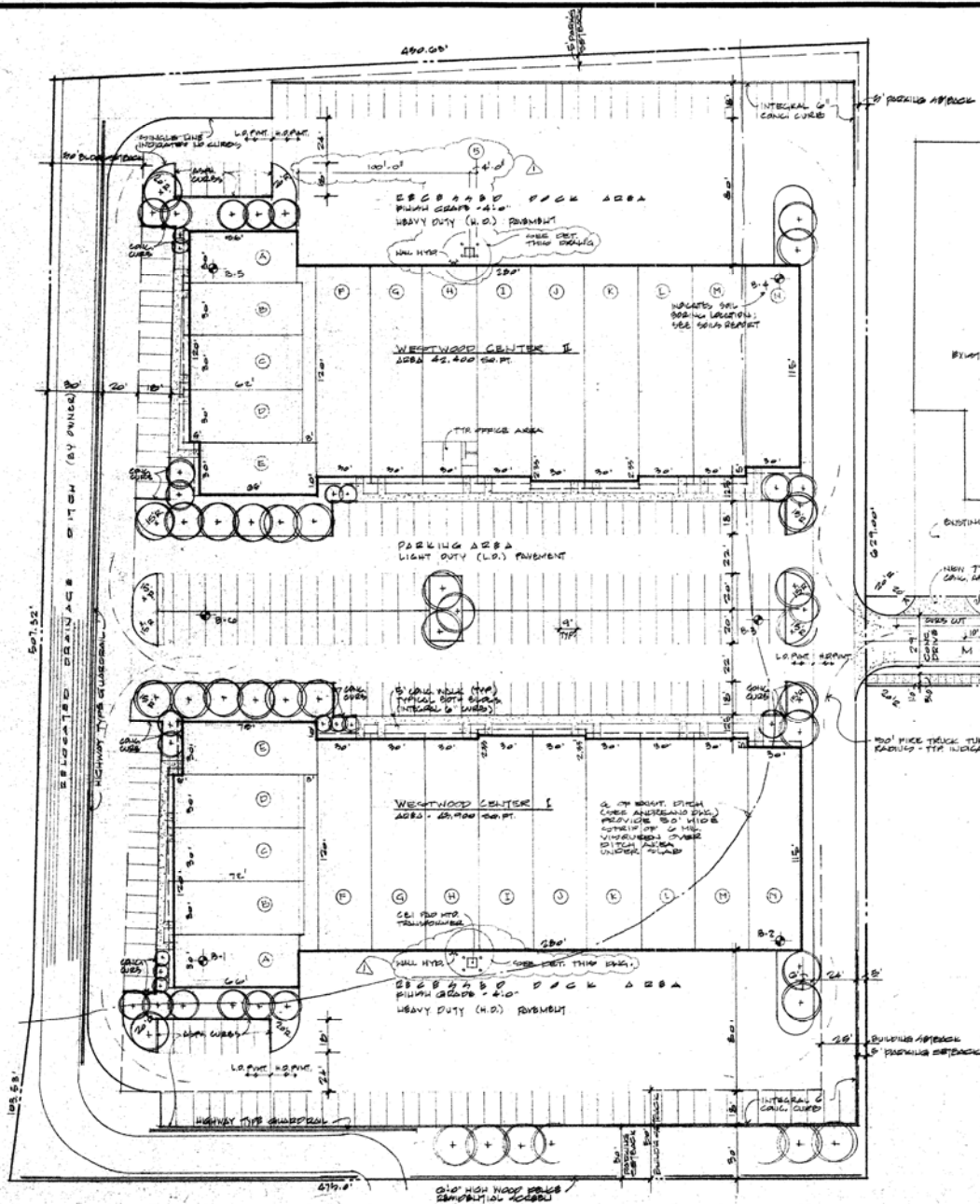


INTERSTATE I-90

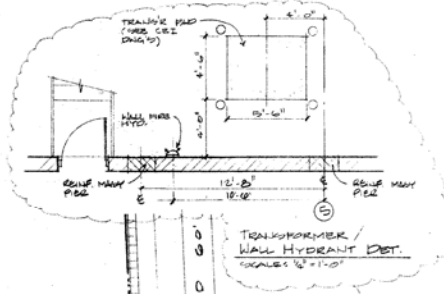


PAVEMENT NOTES:

GENERALLY
 PREPARE SUBGRADE ACCORDING TO SPEC. REPORT
 AND PROVIDE SLOPE TREATING BY MEANS OF CURBS, ETC.

LIGHT DUTY PAVEMENT (L.D.)
 2.5" MIN. OF #3 BARS OR EQUIV. SPACING WITH
 COMPACTED HOT BITUM. SURFACE
 1" - #304 SANDWICH BARS
 2" - #402 SANDWICH BARS
 1" - #304 SANDWICH SURFACE COURSE

HEAVY DUTY PAVEMENT (H.D.)
 1" CONCRETE PAVEMENT TO 3" BELOW CURB
 2" - #304 SANDWICH BARS
 1" CONCRETE PAVEMENT TO 3" BELOW CURB
 2" - #304 SANDWICH BARS
 1" CONCRETE PAVEMENT TO 3" BELOW CURB
 2" - #304 SANDWICH BARS



SITE SUMMARY
 TOTAL BUILDING AREA - 80,000 SQ. FT.
 TOTAL PARKING - 250 SPACES
 TOTAL DRIVEWAY - 250 SPACES
 LOT COVERAGE - 31%

- NOTES:
1. WORK THIS DRAWING BY SITE IMPROVEMENT DINGS 1-4 BY CARL ANDREAS & ASSOC.
 2. GENERAL CONTRACTOR SHALL STUDY TOPOG. & SLOPE OF CONTIGUOUS & ADJACENT LOTS AND PROVIDE SLOPE TREATING TO FULL ABOUT CURVES. MAINTAIN SLOPE TREATING. ALL LANDSCAPING BY OWNER.

SITE PLAN
 SCALE: 1" = 20'-0"

revisions:
 0 - 7 - 88
 1 - 3 - 88
 2 - 1 - 88
 3 - 5 - 88
 4 - 1 - 88
 5 - 1 - 88
 6 - 1 - 88
 7 - 1 - 88
 8 - 1 - 88
 9 - 1 - 88
 10 - 1 - 88
 11 - 1 - 88
 12 - 1 - 88
 13 - 1 - 88
 14 - 1 - 88
 15 - 1 - 88
 16 - 1 - 88
 17 - 1 - 88
 18 - 1 - 88
 19 - 1 - 88
 20 - 1 - 88

title:
 MULTI-TENANT BUILDING
 WILSON & DAVIDSON ARCHITECTS
 24650 center ridge road suite 131 westlake, ohio 44145-7108/835-3957



date: MAY 15, 1988
 job no. 85-017

SP. 1
 drawing: