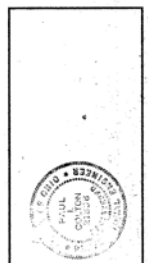


THE BLAIR CONSTRUCTION CO., INC.
 1748 EAST TWENTY THIRD STREET
 BRECKVILLE, OHIO
 AREA CODE 813 0 PHONE 621-6136

ROBERT I. BROIDA - ARCHITECT
ROBERT F. KELLER - ENGINEER

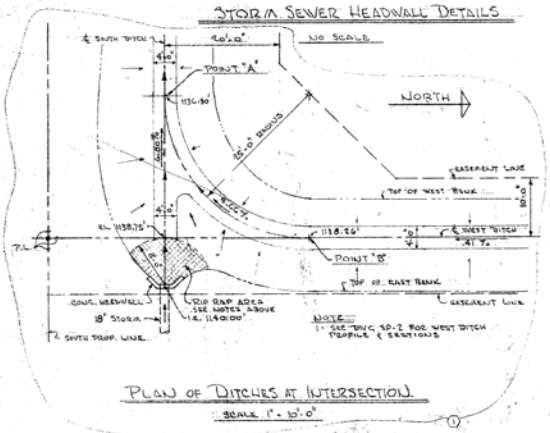
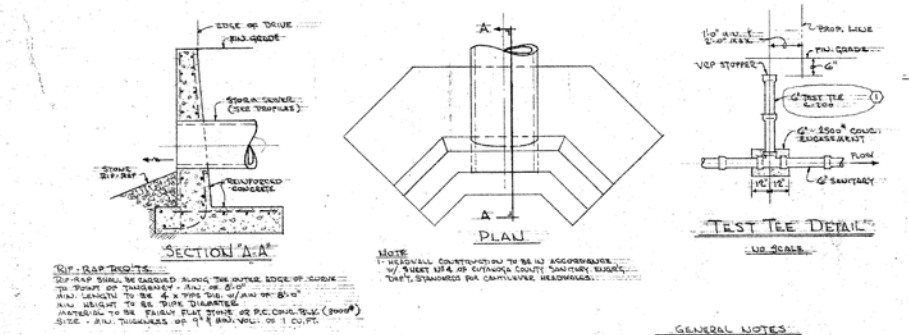
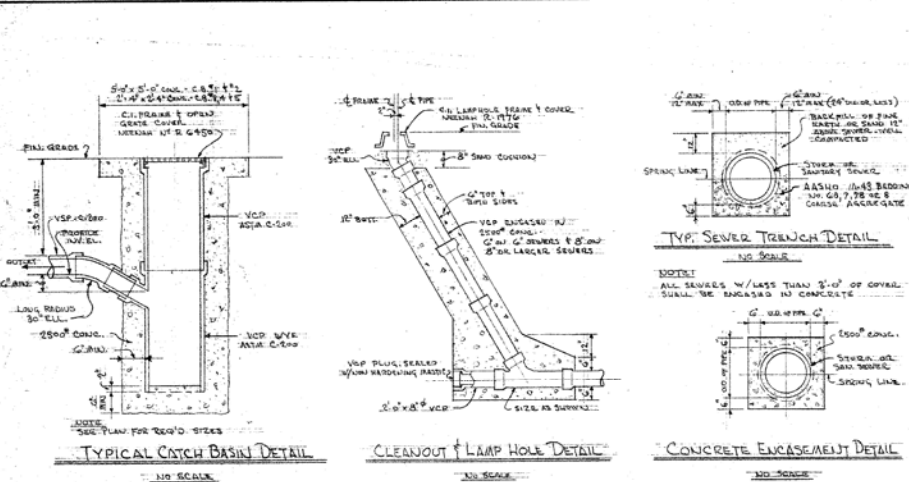


OFFICE WAREHOUSE
 FOR
LAWRENCE COVEN & ASSOC.
 BRECKVILLE & SNOWVILLE ROADS
 BRECKVILLE, OHIO

JOB NO. 6832
DATE 6-10-71

REVISION NO.
 11/2/71 FOR C&E APP.
 12/17/71 FOR C&E REVIEW
 12/17/71 FOR PERMIT

DRAWING NO.
SP-1



- GENERAL NOTES**
1. ALL SEWER CONSTRUCTIONS SHALL CONFORM TO THE SPECIFICATIONS AND CONSTRUCTION DETAILS OF CITY/STATE SANITARY ENGINEERING DEPT.
 2. ALL SANITARY & STORM CONDUITS EXPOSED TO LOWER PIPE & MANHOLES SHALL BE ENCASED IN CONCRETE TO THE UPPER PIPE IN 2500# CONCRETE TO THE WIDTH OF TRENCH.
 3. SANITARY SEWERS TO BE VCP C-200 W/ PRELIMINAR JANTS WITH C-200.
 4. STORM SEWERS TO BE VCP C-200 W/ RUBBER JOINTS AND/OR REINFORCED CONCRETE PIPE C-76 GLASS (C-76 UNDER PERMITS).
 5. ALL SEWERS W/ LESS THAN 2'-0" COVER TO BE ENCASED IN 2500# CONCRETE (SEE DETAIL "CONCRETE ENCASUREMENT").
 6. STORM TRENCHES BASED ON 3" CHANNELS (1.5" DEEP FOR TRENCH APPROXIMATE BREADTH AND 1.5" DEEP FOR TRENCH APPROXIMATE BREADTH AND 1.5" DEEP FOR TRENCH APPROXIMATE BREADTH).
 7. STORM TRENCHES BASED ON 3" CHANNELS (1.5" DEEP FOR TRENCH APPROXIMATE BREADTH AND 1.5" DEEP FOR TRENCH APPROXIMATE BREADTH).
 8. SANITARY MANHOLE SLABS TO BE DETERMINED BY FUTURE TRENCH DEPT. - DITCH LINES SHOW MAXIMUM POINTS TO DETERMINE MAN HOLES OF EXISTING SEWERS.
 9. GRADES BASED ON SURVEY THE POINTS BY WHEELER & McLENNAN DATED OCT. 17TH (SEE TRAC. LOG. 102).
- LEGEND**
- ST - STORM SEWERS
 - SAO - SANITARY SEWERS
 - BLKTOP - LEAN FINISH GRADES

